

PARENT BULLETIN

Week Ending: Thursday 1st April 2021

Note from the Headteacher, Ms A Sharma: I am pleased to announce that we held a very successful 'Eco Day' yesterday. Both staff and students engaged in interactive and enjoyable activities without the use of technology around the theme of 'Fair Trade Fashion'. The atmosphere around the school was positive and vibrant and it was great to see so many students involved in animated discussions. Well done to everyone. A huge thank you to our staff, students, Governors and you as parents and carers for all the support and hard work. Have a lovely Easter break.

A reminder that school reopens after Easter break for all students on **Monday 19th April**.

ECO Day:



Year 9 History lesson



Year 10 Maths lesson

Teachers switched off their screens this week and students participated in outdoor lessons during our annual Eco Day. Year 9 enjoyed a History lesson with park view, Year 10 maths lesson was held in the playground. Year 11 prepared for their Psychology debate in the courtyard and Year 8 Science loved their outdoor lesson.

Spelling Bee Results:

Congratulations to everyone who competed in stage 2 of the French & Spanish Spelling bee and Translation bee. It was a hard-fought competition. Top of the class in Year 8 were Farjin, Epziba and Sagarika. In Year 9 Simar, Maegan, Johan and Cavan were the top performers.

But the overall winners, who will be representing the school in Stage 3 are Epziba and Maegan for Spanish and Simar and Johan for French. In Year 7 Siyona, Nicole and Izaan for French, Rida, Aminah Zaheer and Jathushigah for Spanish, were the top 6 performers and will each receive a certificate for their achievement. But the overall winners, who will be representing the school in stage 3 are Siyona, Nicole and Rida. Well done to all our finalists.

Reopening of the Library:



We will be reopening the library for all students to use from Monday 19th April.

We have been busy extending the accelerated reading section with more fiction available on book shelves and a new AR labelling system which will make it easier for your child to choose a book.

Monday: Y7: lunch and afterschool until 4.30pm

Tuesday: Y8: lunch and afterschool until 4.30pm

Wednesday: Y9 lunch and afterschool until 4.30pm

Thursday: Y10 lunch – after school closed to all students

Friday: Y11 lunch and afterschool open to Y10 and Y11

Easter Book Review 2021

Competition:

We are asking students to write a book review of a favourite book or something they have read that they have really enjoyed. The competition is open to all year groups and prizes will be awarded to the top five reviews after the Easter break. Please send your entries to

librarian@villiers.ealing.sch.uk

or

swelsford@villiers.ealing.sch.uk

You can add a photo of yourself with the book of your choice. Below is a link that will give you advice/tips on how to write a book review.

<https://www.booktrust.org.uk/books-and-reading/tips-and-advice/writing-tips/writing-tips-for-teens/how-to-write-a-book-review/>

Year 11 Languages:

Year 11 Pupils who have been entered for their home language GCSE exam will have their key assessment 1 Reading and writing exam which will take place on Thursday 22nd April at 2.30pm until 4.55pm in N13.

Summer 2021 A Level and GCSE grades and results:

The Joint Council for Qualifications (JCQ) have now issued a guidance document for students, parents and carers for GCSE and A Level grading this Summer. This is on our website and can be found by clicking [here](#). We have written a Centre Policy for A level and GCSE grades and this can be found on our website by clicking [here](#). The Results Day for A level and L3 BTECs is **Tuesday 10th August** and for GCSEs and L2 BTECs is **Thursday 12th August**. Students should come into school to collect their results between 9am and 12pm.

Daily Contact Testing:

On our return from the Easter break, we will be taking part in a trial organised by Oxford University to see if Daily Contact Testing (DCT) is safer than self-isolation. DCT will replace self-isolation for staff and students when they encounter a positive case – if they agree to take part. Around one in three people who have COVID-19 have no symptoms and could be spreading it without realising it after their period of self-isolation. DCT will mean that asymptomatic cases will be detected. By increasing the positive cases detected, DCT is potentially the best way to reduce the transmission of COVID-19 in the community. The trial aims to answer this question, and the safety and progress of the trial is regularly reviewed by a panel of independent experts. A letter and a flyer with frequently asked questions are included at the end of this bulletin. Please read these and if you have any further

questions or concerns, please contact Ms Ahmed: HAHmed@villiers.ealing.sch.uk.

Home lateral flow testing

Students should continue testing twice a week on a Monday and Thursday evening during the Easter break. Students have been given guide books and you can also watch a video showing you how to complete the home test by clicking [here](#). If your child cannot test themselves at home or if they need support in doing so, please email Ms Ahmed: HAHmed@villiers.ealing.sch.uk

Results

Please help your child to check their results each time they complete a home test.

Please note: Two lines – even faint lines – indicate the test is positive

- If a student has an invalid or void result, they need to repeat the test
- **If a student has a positive result, they must not attend school.**

Positive results

If your child receives a positive result, please follow the guidance below:

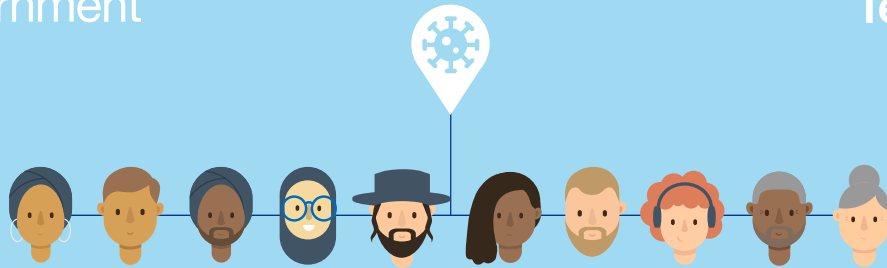
- NHS Test and Trace are reintroducing confirmatory PCR testing for positive LFD tests. This means that all staff and students who get a positive LFD test, should get a confirmatory PCR. The PCR test should be booked immediately either [online](#) or by calling 119 and should be undertaken within 2 days.
- Staff and students who had a positive LFD test

result, and their close contacts and other members of their household, should self-isolate immediately in line with [NHS Test and Trace guidance](#) and while awaiting the PCR result. If the PCR test is negative, it overrides the LFD test and the staff member, or student can return to school, and their close contacts can end their self-isolation.

- You must inform us of the result, you can email: HAHmed@villiers.ealing.sch.uk or phone us: 020 8813 8001 ext 1368
- If a positive result is received, **the school will identify the close contacts** and advise them to self-isolate as well as informing NHS Test and Trace. The member of staff or student should not be identifying the close contacts themselves.

Mental Health and Wellbeing:

Childline	Call 0800 1111 Webchat: childline.org.uk
Mind	Call 0300 123 3393 Text 86463 Email info@mind.org.uk
Papyrus	Call 0800 068 4141 Text 07786 209 697 Email pat@papyrus-uk.org
Samaritans	Call 116 123 Email jo@samaritans.org



A STUDY OF DAILY CONTACT TESTING OF CLOSE CONTACT GROUPS IN SCHOOLS AND COLLEGES

Dear Parent/Carer

As a school we will be taking part in a new study called “Daily Contact Testing” which is being led by the Department for Health and Social Care through NHS Test and Trace.

WHY IS THIS STUDY IMPORTANT?

Normally, when we identify a person has COVID-19, the whole group of people that have been in close contact with that person have to go home and self-isolate for 10 days to stop the virus spreading. This can mean lots of people being absent from school or college, but it is important to do this to protect the other people in school and at home.

This study will seek to understand if students and staff can continue to come to school safely after they have been in close contact with a person who is positive for COVID-19, by testing them on school days for 7 consecutive days with Antigen Lateral Flow Device (LFD) rapid tests. If a member of staff or student does not have a positive result, they will be able to take part in school activities. Staff and students will need to self-isolate at home in the evenings, weekends and holidays.

IS TAKING PART VOLUNTARY?

Participation in the study is completely voluntary. If staff or students do not wish to take part they must continue to follow national guidance and self-isolate if identified as a contact. The school will continue to support students self-isolating at home. If a student chooses to take part in the study, they can change their mind at any time. If they stop taking the tests they must self-isolate for 10 days after contact with the person who tested positive for COVID-19.



WHAT DOES THE STUDY INVOLVE?

When a positive case is identified in school, for example through the twice weekly home testing, the school will be asked to tell the research team those individuals who are taking part in the study that had been in close contact.

Students and staff identified as a close contact who are taking part in the study will be asked to perform COVID-19 tests on school days for 7 consecutive days:

- A rapid test at school every day – this will involve rubbing of a soft cotton bud on the inside of the nostrils to test for the virus. The result is available within 30 minutes.
- A [Polymerase Chain Reaction](#) (PCR) test at home on day 2 and 7 – two home PCR testing kits for the study will be provided. These are similar to the tests performed at NHS Test and Trace sites. A swab is taken at home from the nose and throat to be processed in a laboratory at the end of the study (there will be instructions on how to return the swab). Results of these tests will therefore not be available until after the 7-day testing period.

Unless the rapid test is positive, students and staff will be able to take part in school activities. They will need to continue self-isolating when not at school. Rapid test results will be given verbally by the school or by text message.

Students and staff will be asked to complete a brief survey on day 7 and may be invited to speak to a researcher about daily testing.

WHAT HAPPENS ON NON-SCHOOL DAYS?

On non-school days students and staff will not receive a rapid test and will be required to self-isolate. If the last day of daily testing falls on a Saturday or Sunday, a final rapid test will be needed to complete daily testing on Monday.



WHAT IF A RAPID TEST IS POSITIVE DURING THE STUDY?

A positive result with the rapid test means the individual must follow [the national guidance](#) and self-isolate for 10 days.

If someone who is taking the daily tests comes into contact with someone who tests positive for COVID-19 again, the tests on school days for 7 consecutive days will restart. If they do not want to do the tests again they can self-isolate as per national guidance.

If a student receives a positive test at any point during the study they will be asked to take an additional special home PCR testing kit for the study.

WHAT HAPPENS IF THE RAPID TEST IS NOT POSITIVE DURING THE STUDY?

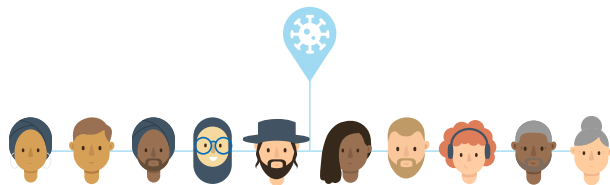
This means students can continue with normal school activities until the next test is due. Students will need to continue self-isolating when not at school.

Sometimes, a student could still have COVID-19, even if they do not have a positive test result. This means everyone should continue to wash their hands, cover their face and maintain social distancing as normal.

WHAT ARE THE BENEFITS AND RISKS OF TAKING PART?

As this is a new study and has not been done in school before there is an additional risk to taking part as we cannot know exactly what the impact will be. Sometimes a person may still have the virus, even if they do not have a positive test result. However, it is thought they are less likely to spread COVID-19, as they either do not have the virus or have a very low level of virus. It is very important that the national guidance to stop the virus spreading (including social distancing, hand washing, using face coverings) is followed at all times.

Consideration should be given to how taking part in the study may affect the other people in your house or people you see regularly. For example, if you live with another person who has health problems you may decide you would prefer to self-isolate rather than continue attending school/college. This is because the rapid test is best at identifying those who are infectious and most at risk of transmission but there may still be some individuals who have the virus and are not detected by the test.



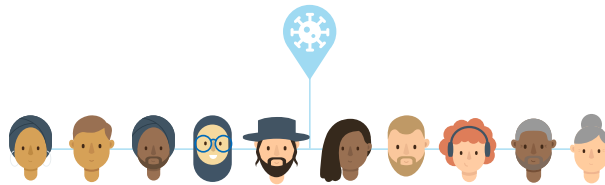
WHAT WILL YOU DO WITH MY INFORMATION?

This is a summary of the School's Privacy Notice for Daily Contact Testing Trial, with which you will be provided a copy:

We will collect personal information, including name, date of birth, contact details and names of contacts at school for you and the people you have been in contact with. This information, together with COVID-19 test results will be provided to the Department of Health and Social Care (DHSC) so they know when someone tests positive to help stop the spread of the virus. Information is also shared with DHSC to help assess how effective the trial is. DHSC are the 'controller' for this use of personal data – they decide how it will be used and are responsible for it. The school use this information to help us manage our COVID-19 response within the school – where we do this, we are the controller of the personal data.

The use of personal data by the school and by DHSC is made lawful as it is being used for the protection of public health. We will keep all the information securely in accordance with the UK General Data Protection Regulation (UKGDPR) and Data Protection Act 2018.

If you would like to ask about how your personal data is used or if you have a complaint you can contact: DHSC data_protection@dhsc.gov.uk



ARE HOUSEHOLD CONTACTS OR OTHER PEOPLE ABLE TO PARTICIPATE?

This study is **only** open to students and staff at schools/colleges who have been identified as a close contact of a student or staff member whilst at school/college. If a student or staff member has a positive household contact, they (the student or staff member) are not able to participate and must self-isolate as per national guidelines. In addition, other people who have been in close contact with someone with COVID-19 need to self-isolate, following the [national guidance](#).

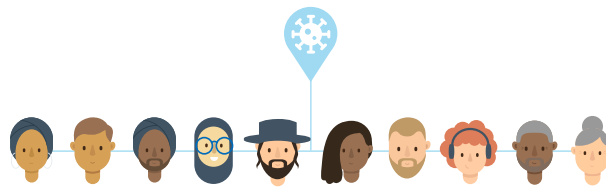
WHAT SHOULD A STUDENT DO IF THEY DEVELOP SYMPTOMS?

If students develop symptoms at any time during the study, they must immediately self-isolate and book a test at <https://www.gov.uk/get-COVID-19-test> or by calling 119. The school/college should be informed if the test result is positive.

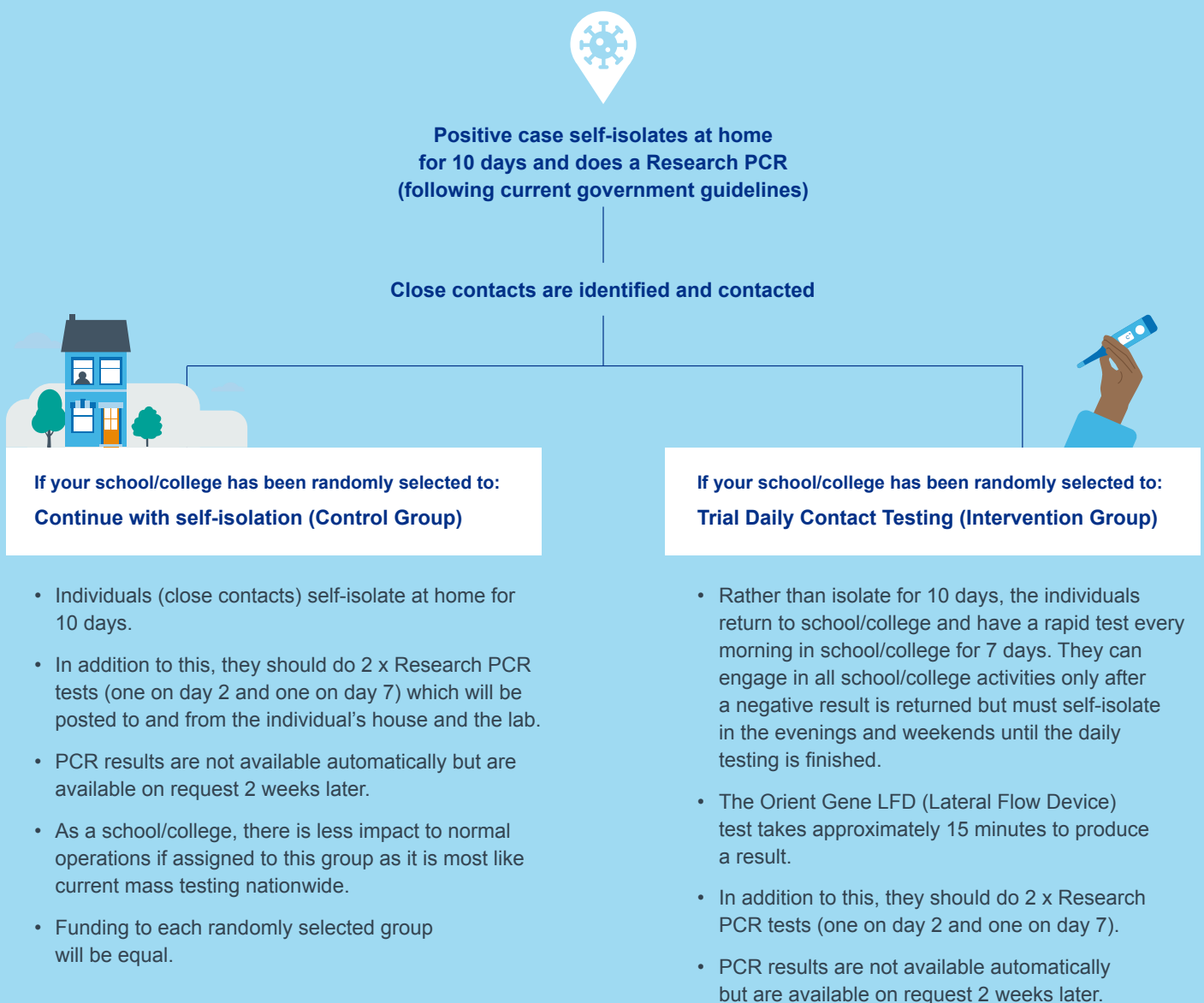
If you have any questions about this, please contact the school via Ms Ahmed
HAhmed@villiers.ealing.sch.uk.

Yours sincerely,

Aruna Sharma
Headteacher



WHAT IS THE DIFFERENCE BETWEEN DAILY CONTACT TESTING AND SELF-ISOLATION?



For any enquiries, please email
[**dct-pilotpmo@dhsc.gov.uk**](mailto:dct-pilotpmo@dhsc.gov.uk)

DCT FAQs



Test and Trace

Why does my child have to do a test for 7 school days?

Antigen lateral flow device (LFD) rapid tests are more accurate the more virus that is present. We know that the levels of virus in a person can change from the day of exposure, normally peaking around the onset of symptoms. By testing on school days for 7 consecutive days we can detect the vast majority of cases. Students must isolate during weekends and holidays.

How is the schools/colleges clinical trial being monitored?

The trial is being co-ordinated and managed by Department of Health and Social Care (DHSC), Department for Education (DfE) and Office of National Statistics and ethics cleared by PHE.

It will also be independently evaluated and overseen by an independent data monitoring committee and a trial steering group.

Should my child have an LFD if they previously tested positive?

Twice weekly testing is not needed for 90 days after testing positive. However even people who have recently tested positive need to self-isolate if they are a close contact of someone testing positive for coronavirus. Therefore you may opt to do DCT with LFDs rather than self isolate if your school/college is in the Intervention Group of the study. If you test positive in DCT, you will have to self-isolate for ten days.

How accurate are the LFD tests?

LFDs perform best when levels of virus are at their highest. This means they are particularly useful as a means of finding infections in individuals who do not experience and show any symptoms, but who could still be infectious and pass the virus to others. LFDs are highly sensitive and test positive in the majority of people with high amounts of virus present.

If I don't want my child to do DCT, what happens?

DCT is not mandatory. If you do not wish your child to do DCT or stop mid-way through, your child will revert to the legal duty to self-isolate for the original 10-day period.

What if my child has an invalid result?

If the test is invalid, the participant should have another LFD test.

What if my child does not test positive?

If your child's daily test is not positive, it is likely that they are not infectious, and may continue with schools/colleges that day while following the simple guidance of Hands, Face and Space. In the evenings and at the weekend however, they must follow the government guidelines and self-isolate at home.

What if my child tests positive?

If the test is positive, you should assume your child has the virus, self-isolate immediately, and follow government guidelines.

What is Daily Contact Testing (DCT)?

Daily Contact Testing (DCT) is the regular, daily testing of **close contacts** of individuals who have tested positive for COVID-19.

What is the benefit of taking part in this trial?

To keep students in face-to-face education for as much time as is possible.

To restrict self-isolation to a primary group of people (positive case) and reduce the impact of self-isolation to a secondary group of people (close contacts).

Why do LFD tests give 'false positives'?

LFDs give a very small number of false positive results out of every 1000 tests performed. LFDs are particularly useful as a means of finding infections in individuals who do not experience and show any symptoms, but who could still be infectious and pass the virus to others.

If my child is engaged in DCT, what can my household do?

They should continue about their day as per normal.

If your child tests positive or develops symptoms during the testing regimen, they should start self-isolating in line with government guidance.

How safe is DCT?

According to initial research, 7 days of DCT may prevent more additional transmission than quarantine if DCT is followed fully. DCT has potential advantages of tracking more contacts earlier, whether they have symptoms or not. DCT may also reduce the social and economic burden of quarantine on contacts. In school-type settings, mass testing and DCT are shown to be more effective at reducing infections than year-group isolation in initial studies. The purpose of DCT in schools/colleges is to confirm these early findings in a larger group.

